



Rumbleseat Review



www.wichitaas.com

WICHITA A'S MODEL A FORD CLUB

Volume 38 Issue 5

P.O. Box 25, Wichita, KS

May 2023

May 2023

S	M	T	W	TH	F	S
	1	2	3	4	5	6
7	8	9	10	11	12	13
	15	16	17	18	19	20
21	22	23	24	25	26	27
28		30	31			

June 2023

S	M	T	W	TH	F	S
				1	2	3
4	5	6	7	8	9	10
11	12	13	14	15	16	17
	19	20	21	22	23	24
25	26	27	28	29	30	

July 2023

S	M	T	W	TH	F	S
						1
2	3	4	5	6	7	8
9	10	11	12	13	14	15
16	17	18	19	20	21	22
23	24	25	26	27	28	29
30	31					

May Refreshments Beverage
Jane McLaughlin
Treats
Richard Sanchez
Brenda Broadhead
Bonita Graham

CLUB TOURS & MEETING SCHEDULE

May 2023



21..... Club Picnic.....McLaughlin
22..... Club Meeting at Minisa Park 704 W. 13th.....7:00PM

June 2023



9..... Newsletter Deadline...sheorr@sbcglobal.net.....Sheila Orr
11..... All Wheels Day/Lake Afton.....
11-16..... High Country Tour in Breckenridge, CO.....Kibbe
26..... Club Meeting at Minisa Park 704 W. 13th.....7:00 PM
29..... The Great Race at Old Town.....Wichita

July 2023



4..... Derby 4th of July Parade.....Hilemans
7..... Newsletter Deadline...sheorr@sbcglobal.net.....Sheila Orr
24..... Club Meeting at Minisa Park 704 W 13th.....7:00PM

WHAT'S INSIDE

Calendar	1
President & Secretary	2-3
Announcements	4
Future Tours	5
Past Tours	6-11
National News	12-13
Tech Talk	14
Era Fashion	15
Swap Meet/ Nat'l Schedule	16

The Wichita A's meet on the 4th Monday of the month except December. We do not hold a meeting during the month of December. Other meeting changes will be published in the newsletter prior to the scheduled meeting. The meetings are held at Minisa Park, 704 W. 13th, Wichita, KS. Meeting time is 7:00 PM unless otherwise noted in the newsletter.

Wichita A's Model A Club Meeting—April 24, 2023

WELCOME AND CALL TO ORDER – President, **James Sharp** called the meeting to order and led the group in reciting the Pledge of Allegiance.

MINUTES (March 27, 2023) – **Jim Broadhead** motioned to approve the minutes. Motion was seconded and carried.

TREASURERS REPORT– **Claudia Ellerman** gave the treasurer's report. Report revised to reflect one check that was written but not previously reported.

COMMUNICATIONS – **James Sharp** announced that there are 8 upcoming car shows. **Doris Jean** brought canna bulbs for anyone, who may want them. **James Sharp** presented **Sheila Orr** with a certificate of achievement to acknowledge the effort she puts forth on the club newsletter, *The Rumble Seat Review*. **Brenda Broadhead** mentioned that there are still openings for the club meeting treat sign ups for August, September, October and November.

MARC and MAFCA–no report.

WACCC REPORT – **Stuart McNeal** reported that regarding the upcoming car shows, he has placed flyers with information on the shows at the front table for club members to review. **Stuart** mentioned that the WACCC website on Facebook also has all the car show information.

SUNSHINE REPORT - **James Sharp** gave an update on the status of his kidney transplant. He was prepped and in pre-op when his kidney transplant was cancelled and had to be rescheduled for 5/4th.

PAST TOURS – **TRIP TO CARLTON** – **Don Grabendike** reported that the club had a great trip to Carlton, KS. Nearly the entire town turned out for the wonderful luncheon provided to the town residents and club members. Signs were posted that the Wichita Model A Club was in Carlton. If anyone has metal signs available that they do not need, please give to **Don**.

UPCOMING TOURS – **BIG KANSAS ROAD TRIP (BKRT)** – **Mike James** reported that the BKRT is being planned for May 4th – May 7th. The counties being toured this year include Jewell, Republic and Smith. Overnight accommodations are limited so let **Mike** know ASAP if you want to participate.

MAY CLUB PICNIC – This years club picnic is being hosted by **Jane and Steve McLaughlin** on 5/21. Car games will start at 5pm. Hotdogs will be placed on the grill at 5:30pm and the meal will start at 6pm. Club members are asked to bring a side or a dessert. **Donna Hileman** announced that club members are invited to participate in the **JULY 4th DERBY PARADE**. The library has a conference room that she has reserved for lunch following the parade. The charge to participate is \$5. **Stuart McNeal** announced that **ALL WHEELS DAY** is being held in June on the same weekend as the Regional Meet in Breckenridge, CO. **Linda Kibbe** announced that so far there are 5 cars going to the **HIGH COUNTRY TOUR IN BRECKENRIDGE**. The first night of the trip will be spent in Syracuse, KS and the second night will be spent in Canon City, CO. **THE GREAT CAR RACE** - **James Sharp** announced that the car race will be traveling though Wichita this year. **Don Grabendike** will plan a club activity centering around this event. **Don Grabendike** announced that he will also be conducting the **WIZARD DRIVING SCHOOL** for individuals wanting to learn to drive a Model A. If interested, see **Don**.

OLD BUSINESS – none.

NEW BUSINESS – none.

PROGRAM – Club members shared stories: **Jim Broadhead** has been a tornado watcher and amateur radio operator for 57 years. **Greg Rau** shared a story regarding a Ukraine family settling in KS. Multiple club members shared their story about their first Model A.

NEXT MEETING – May 22, 2023

ADJOURNMENT – **James Sharp** adjourned the meeting.

Submitted by **Kathy James**, Secretary

MODEL A CLUB BOARD MEETING (April 24, 2023)

Members Present: **James Sharp, Frank Chenoweth, Claudia Ellerman, Alan Orr, Barry Plunkett, Kathy James**

Absent: **Gil Adams**

The board met briefly during the break on the April 24th, 2023 meeting. **James Sharp** shared a letter that he received from the organizers of the Regional Model A Meeting in Breckenridge in June requesting a monetary contribution or donation of items for the meet. Discussion followed and ideas shared. **Kathy James** recommended that \$150 be donated towards the cause. **Barry Plunkett** seconded the motion. The motion carried. **Claudia Ellerman** volunteered to spearhead a contribution from the Model A Club.

Submitted by **Kathy James**, Secretary

President's Report

It seems as if summer is here with the warm weather we have been experiencing.

The club has two major events planned for the month of May. **Mike and Kathy James** hosted the great Kansas Road Trip early in May. We are looking forward to their adventures at the May meeting. The club picnic is being hosted by the **McLaughlins** of Cheney on May 21.

My kidney transplant was successful on May 4. As I write this note on May 5, I am still hospitalized at Saint Luke's Hospital in Kansas City. The doctors are very pleased with the surgery for both myself and my donor **Tammy Sharp**. I appreciate the cards and concerns from each of you during this journey. I look forward to rejoining the club activities when I am released by the care team.

Jim Sharp, President

Vice President

Thanks to those who stepped up and told interesting stories about their first Model A's. at the April meeting.

The program for May will be presented by **Hank Cocking**, the owner and trainer of Midwest Dog Center. He will have a dog with him and I think it might be interesting for children or grandchildren. Plan to bring them if it is not too late for a school night. Hope to see everyone at the meeting.

Frank Chenoweth,
Vice President

Editor



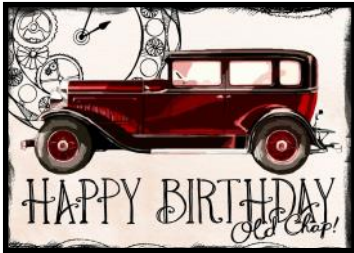
Hope everyone is enjoying the spring weather! Mostly sunny skies, and warmer weather! We even had some rain last night- Certainly need it!

As I write the group just came back from the Big Kansas Road Trip-Sounds like they had a wonderful time! Then in a few weeks another group will leave for Colorado. The annual picnic is May 21st-so please come out and join the fellowship.

Our fearless leader **James Sharp**, is healing and sounds strong. Great work these doctors and hospitals accomplish!

Until next time,
Sheila Orr
Editor

Announcements



New Members

Eric and Sue Seiler
'29 Coupe



Congratulations to **Sheila Orr**, Editor. She was presented the MARC 2022 Award of Highest Achievement for the Rumbleseat newsletter for the Wichita A's!

- June Birthdays**
- 3 Gil Adams
 - 3 Rex Kraus
 - 4 Tonya Jordan
 - 4 Glenda Sill
 - 13 Helen Louise Beaver
 - 17 Melanie Adams
 - 17 Christy Johanson
 - 18 Alan Orr
 - 18 Barry Plunkett
 - 20 Trudee Harshfield
 - 24 Sheryl Wilson
 - 23 Diana Grube
 - 27 Judi Sharp

MAFFI BRICK COLLECTION
 There was \$13.25 collected in the Headlight from the April meeting. Total is now \$76.25

Denny Ellerman



For those who have not heard, **James Sharp** has had his transplant and doing very well! His donor, **Tammy Sharp** is also doing great!

Miracles!!



Refreshments



Newsletter Deadline

Friday, June 9, 2023
Sheila Orr
 sheorr@sbcglobal.net or
 316-207-8878

May	June	July
Beverage Jane McLaughlin	Beverage Marcia Kurtz	Beverage Sheila Orr
Treats Bonita Graham Richard Sanchez Brenda Broadhead	Treats Marcia Kurtz Dale Hellar Brenda Broadhead	Treats Barb Phye Dawna Ruggles Kathy James

Future Events

Club Picnic

The Club Picnic will be held at **Jane and Steve McLaughlin's!**

When: Sunday, May 21, 2023

Where:)

Time: 5:30 Eat at 6PM

Please bring a side dish or desert

There will be **car games** prior to picnic. If you want to participate be there by **5PM**



Coffee and Donuts



Men's Coffee and Donuts at **Tom Ruggles** place will be held Thursday, June 1, 8-10AM. Address is

Tom Ruggles

4th of July Parade



What: Derby 4th of July parade
Parade time: 10:00AM
Line Up: 9:30AM at Panther Stadium
Lunch cost: \$5.00 per person
Sign up will be at meetings.

Hilemans and Sharps



Past Tour-Big Kansas Road Trip



2023

The 2023 BIG KANSAS ROAD TRIP (BKRT) is now in the history file. Four Model A's, one modern and nine adventurers made the trek north to Smith, Jewell and Republic counties for three days of discovery. We started our trip at the Ruggles Garage. With fresh coffee, donuts and banana bread to top off our tanks, overcast sky's and cool temps welcomed our Ruggles garage departure as we started our northern quest.

The BKRT is designed to "experience" Kansas. Drive the back roads, see the small towns and appreciate the goodness of Kansas. No East or West Coast big name establishments! With that in mind we headed to Beloit, KS for lunch at Bubba Q's! Like a spaghetti western, we pulled up to Bubba's diner at "High-Noon"! Bubba greeted us from his establishment's front porch, showed us to our reserved table and graciously posed for a picture. Food orders are made from a chalk-board menu. With efficiency, Bubba prepared and served up a great road-tripen lunch.



Bubba (giving the peace sign) welcomed The Wichita A's



Wichita A's gathered at Bubba's—Beloit, KS

This was the 4th BKRT that Kathy and I have had the pleasure of organizing. The challenge, however, was evening accommodations for the group. We learned that small towns do not have an abundance of hotel/motel rooms and add to the fact that Smith county was currently engaged in building a large wind-turbine farm, many of the few rooms available were taken by construction folks. What-to-do, what-to-do! We toyed with the idea of camping out at the Home On the Range cabin (*located in Smith county and on our list of tour sites*) and making this 4th BKRT a more memorable event. Like the TV show "The Waltons" we fantasized how refreshing it would be to capture the true spirit of Dr. Higley (*who wrote the state song of Kansas- Home on the Range*) living in 1875 on the banks of Beaver Creek. In short-order, we jerked our minds back to reality knowing that no Model A'er would enjoy a dirt floor cabin with no toilet, no running water, no electricity, and no bed - especially after driving a team of 40 horses all day!

Continued from page 6



Wichita A's in front of Dr. Brewster M. Higley's cabin

What's in a name? When playwright William Shakespeare asked the question in *Romeo and Juliet*, Juliet's line in telling Romeo that a name is nothing but a name and it is hence a convention with no meaning behind it. We beg to differ with Juliet. Jewell, Kansas in every sense of the word is truly a Jewell. During a pre-tour of the city we learned that the City of Jewell had the foresight to build four motel rooms onto their community center. Checking availability we learned that only three rooms were available for our Model A BKRT. We needed five rooms. The Jewell City office person advised us of a resident (*Daryl*) of Jewell who had rental property and perhaps he could help. Within minutes we lined up two additional rooms for our group; a tiny cabin and a camping trailer with water, sewage, cooking facilities and air-conditioning. True to the town name, the accommodations turned out to both be Jewells in every sense of the word and provided not only sleeping quarters for some of our group but a nightly gathering spot for end-of-the-day relaxing and discussions. Daryl even offered us an extra bedroom at his home if we needed it!



Wichita A's gather at tiny—cabin & travel trailer accom-

With sleeping quarters in place our Model A's were now challenged to get us to the many destination sites on the BKRT. Below is a collage of our travels and sites:

The Jewell County Museum located in Mankato, Kansas provided us with an awe inspiring revelation of the Columbian mammoth found in Kansas. In terms we could more easily relate to, imagine 3 Model A's stacked 3 high end to end. It would take approximately 10 Model A cars to equal the weight and size of 1 Columbian mammoth. These were some big beast!



Continued from page 7



Jewell County Museum

Did you Know?

More Columbian mammoth and mastodon remains have been found in Jewell County alone than anywhere else on the Great Plains.

HEADLINE: A's under arrest for speeding in Jewell County.

The Jewell County jail was interesting. The sheriff and family lived in the front and upstairs of the house and the prisoners were locked in back. Men on lower floor and women cells on top floor.



Inside the Mankato limestone jail house



Before the advent of small cameras, small peepholes were used to monitor prisoners activities.



Athol is a small town in Smith County, Kansas. With a population of 42 people the town folk came up with a simple solution for forecasting the weather.

Continued from page 8



The Ingleboro Mansion provided the Wichita A's with a unique break in our tour – "pie-on-the-porch". We had our choice of blueberry, cherry or peach. All pies were homemade and baked for our arrival



Ingleboro Mansion street view – left.

After getting their bellies full of pie, the Wichita A "men" sought out the home's parlor for some relaxation and poetry reading.



Lebanon, KS is the Geographic Center of the lower 48 states. The Wichita A's made a picture perfect stop at a retro gas station and then drove about 2 miles to the exact center marker.



Continued from page9



Home of a Pawnee Indian village from the late 1700's, the Wichita A's traveled to the Pawnee Indian Village Museum located northwest of Scandia, Kansas. The museum roof covers the floor of a large Pawnee earth lodge that was left intact from an archeological exploration. A rare, complete sacred bundle hangs from the ceiling and the story of the Pawnee Indians is shared with the visitor through a number of individual story windows.

Wichita A's enjoy an outdoor breakfast at Nutin Fancy bakery located in Mankato, Kansas. The bakery cinnamon rolls and quiche were great. The interesting part of our visit was the baker's story. She was a paralegal in Oregon. During 2020 pandemic she purchased site-unseen, a large home in Mankato, set up a bakery and works 12 hour days from 1:00 am to 1:00 pm daily operating her bakery and breathing new life into a small Kansas town.



Below is a series of pictures captured in Scandia, Kansas at C&C High Tunnel Farms. Beginning about 15 years ago, Chris and Christi Jansen started the business from scratch. They attended numerous classes, erected a high tunnel and started growing and selling fresh garden produce year round. Today they have four high tunnels and several adjoining outdoor acres of vegetable crop land nearby. They are the epitome of a small Kansas family farm and American entrepreneurship. With a desire to raise their family in a small town (Scandia population 337) their story is a true testament of the tale of working-class Americans.





The High Banks Hall of Fame National Midget Auto Racing Museum was our next tour stop. Located in Belleville, Kansas the museum preserves racing history and features vintage race cars and memorabilia.



Nearing the end of our BKRT experience, we traveled to Cuba, Kansas for lunch. Upon arrival we learned that Cuba was home to a large number of Czech people who immigrated to the area in the late 1800's. Checking out a wall of photos from previous school classes, Kathy discovered two individuals with the same last name as her mother's maiden name – Blazek. A nice surprise



Our last stop on the 2023 BKRT was to hear a “stump speech” by the organizer of the BKRT – Marci Penner. Marci provided a little friendly competition by asking a number of Kansas trivia questions for prizes. Even though we have toured Kansas in our Model A's for years and have sought out a number of small towns and obscure facts, we learned that we still have much, much more to learn about our state as Marci stumped us on many of the questions. Accordingly, we acknowledge our short-comings and pledge to continue our education as we start planning for BKRT 2024! The 1st weekend in May 2024. Ahooga

Article written by Mike James

MAFCA National Tour

**Plan to Attend Now
July 16 – 21, 2023**



Host: Southeast Touring Group

Backroads to the Classics

Our travels will take us from Auburn, IN across northern Indiana and into southwestern Michigan. Come drive the backroads of this circle tour to discover America's Automotive Heritage, before, during, and after the Model A era.

www.southeasterntouringgroup.com/2023-mafca-national-tour

National Awards Banquet

Nov 30 - Dec 2, 2023

Santa Maria, CA

hosted by the

Santa Maria A's

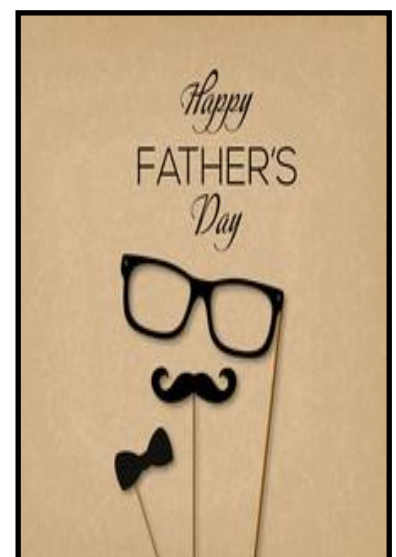


See Ya! in Santa Maria!

Details at www.mafca.com



"It was owned by a little old lady who only drove it to MAFCA meets."



MAFFI Newsletter Minute

Dear Model A'ers,

Model A Days are set for Friday and Saturday, September 15-16 this year. As always, it will be held at the Gilmore Museum Complex in Hickory Corners Michigan. It is not too early to book your hotel.

Information for the Host Hotel is available at the following location

Ford Model A Convention Block 2023
Delta Hotels Kalamazoo Conference Center
2747 South 11th Street Kalamazoo, Michigan 49009:
1-269-375-6000

Last Day to Book: Tuesday, August 22, 2023

\$129.00 USD per night (*These rates are available from September 11-18, 2023.*)

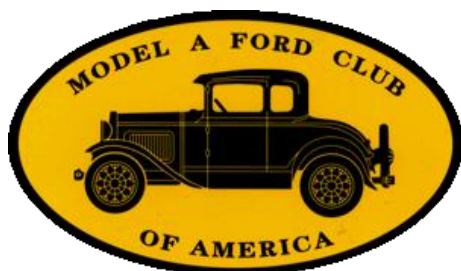
MAFFI Model A Days Events and Registration forms are available now on the Gilmore Website or by searching, "Gilmore Car Museum/Ford Model A Days". To participate in some activities this year you must preregistration by September 1, 2023.

Charles M (Mike) DuBreuil
MAFFI Trustee/Secretary
secretary@maffi.org

Thank you,

Charles M (Mike) DuBreuil, MAFFI Trustee
clubcontact@maffi.org

National Model A Clubs



The Wichita A's Model A Ford Club encourages members to join both National MARC and MAFCA Clubs.



MAFCA

250 S. Cypress St.
La Habra, CA 90631-5515
www.mafca.com
U.S. Membership Cost: \$50

For membership information you can check MAFCA and MARC web sites.

MARC

6721 Merriman
Garden City, MI 48315
<http://modelarestorers.org>
U.S. Membership Cost: \$45

TECH ARTICLE

Walt's Old Time Tech Tip

Walt Jones, Tech Director

As found in "The Quail", the official newsletter of the Model A Ford Club of Great Britain:

The Firewall Terminal Box

by Tom Endy

Reproduction Model A firewall terminal boxes have been around for a long time, however several of those on the market have a potential for a hidden electrical fault that can be very difficult to locate. In fact the fault can cause a major short circuit, could turn disastrous and actually cause a fire.

The terminal box is attached to the firewall by bolts going into brass inserts. However the potential disaster short is not these attachments but the larger terminal studs that take all the wires- if either of these touch the firewall a major short will occur.

The original terminal boxes were constructed so that the two terminal studs (which are both "live") were completely molded into the base of the box during the manufacturing process so there could be no way they could touch the firewall and short out.

Some of the reproductions however, have been manufactured cheaply by forming two holes in the molding and inserting the two studs into the holes from the back. The two studs are threaded to receive a nut on the end of each stud which supposedly keeps the studs in place.

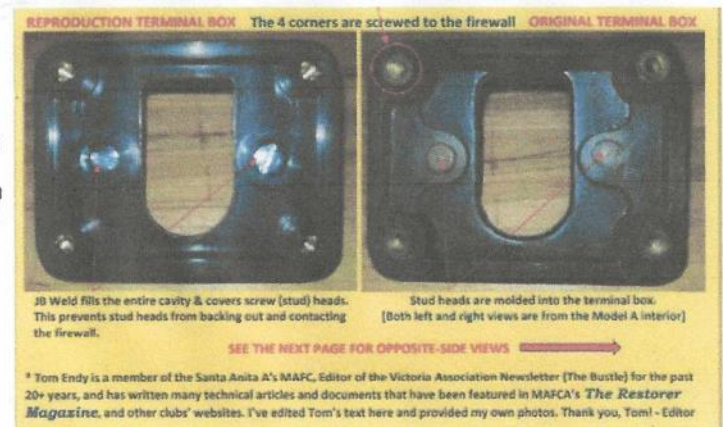
The wires that attach to the ends of the studs are held tight by two additional nuts. On the reproduction ones the two studs can loosen and back out, touch the firewall, and thus cause a short. Both studs always have full battery power on them making them "live" all the time. If either of these studs touch the firewall there would be an out-of-sight almighty electrical short circuit.

It's prudent to inspect and modify any reproduction terminal block with this faulty stud assembly before installing it. First, apply a little Loctite to the threads of the two studs just outside the molding where the nuts sit against the molding. Securely tighten the nuts over the Loctite (don't over-tighten!). Next, fill the hole behind each stud head with JB Weld. This will prevent the stud from backing out and shorting. The terminal block seen at right in the photo has had this done to it.

Our resident UK sparky adds: Excellent advice from Tom Endy. And if the stud with the live feed from the battery shorts against the firewall it won't even show up on the ammeter! JB Weld is not very common in the UK, Araldite or an epoxy filler (usually found in most Model A owners' garages) would be acceptable substitutes. The ammeter terminals within the dash panel right next to the fuel tank are another worryingly close call for a short circuit. Always check, and check again before re-attaching the dash panel back onto the fuel tank! Reading Tom's article hastened me to look at an old terminal box. It was in a dreadful state. PS castellated grommet strip is very useful for irregular or large holes such as that behind the terminal box.



NOTE THE GEAR TEETH DESIGN OF THE 4 CORNER BRASS THREADED INSERTS THAT PREVENT ROTATION WHEN SCREWS ARE TURNED TO TIGHTEN



* Tom Endy is a member of the Santa Anita A's MAFAC, Editor of the Victoria Association Newsletter [The Bustle] for the past 20+ years, and has written many technical articles and documents that have been featured in MAFCA's *The Restorer Magazine*, and other clubs' websites. I've edited Tom's text here and provided my own photos. Thank you, Tom! - Editor



A truly terminal terminal-box



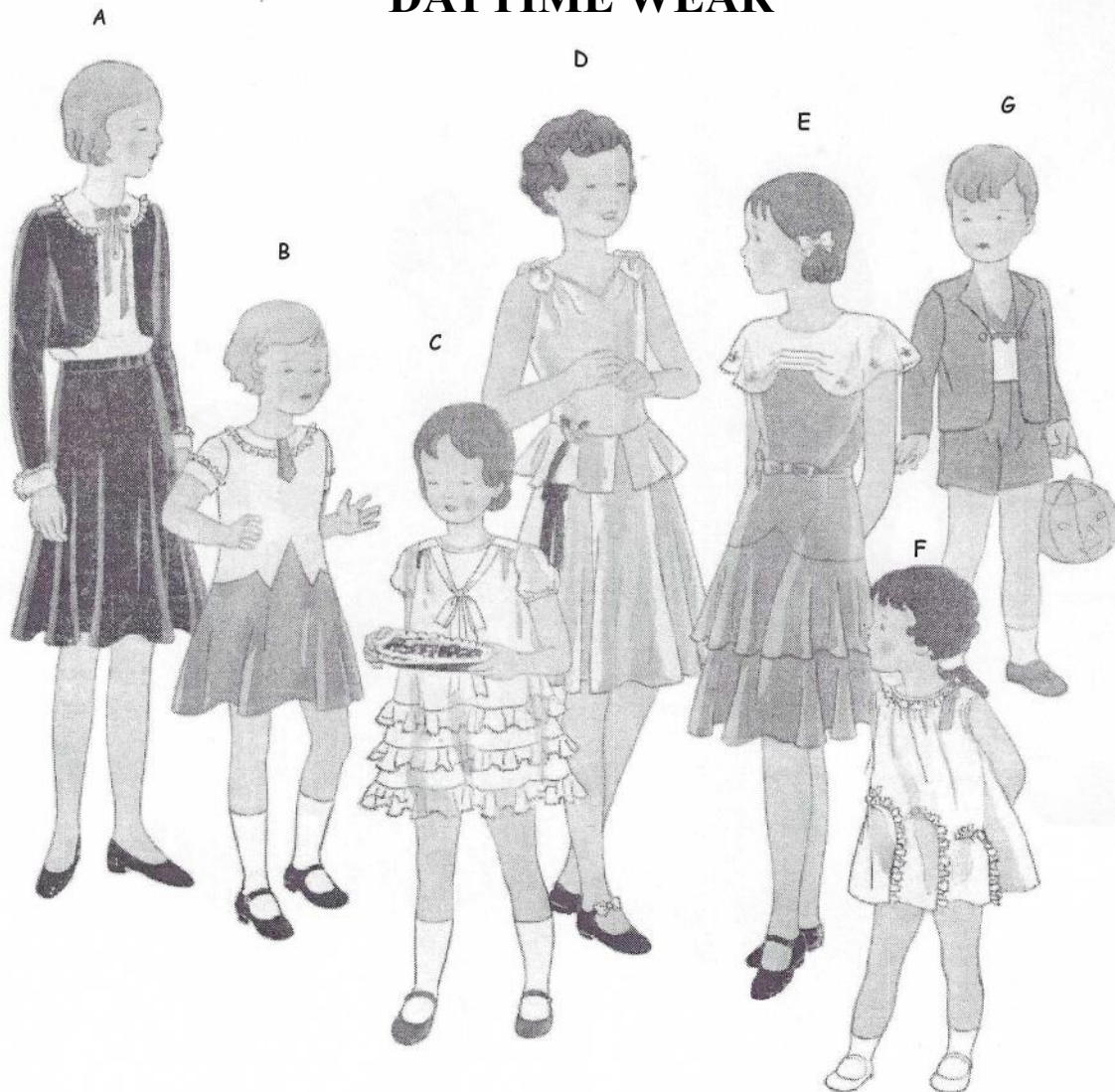
Castellated grommet strip



Contributed by Technical Editor,
Jim Broadhead

ERA Fashion

DAYTIME WEAR



- A. Young miss dress featuring 3 pieces, flared skirt, short bolero jacket and peter pan collared blouse.
- B. Interesting inset detail on small child's dress.
- C. Party frock featuring ruffles and small puffed sleeves.
- D. Young miss dress with peplum flounces and small bow detail on shoulders.
- E. Cape effect and flounced skirt make an attractive young miss dress.
- F. Young child's sleeveless dress using ruffle trim on skirt and neckline.
- G. Little boy's jersey suit and sleeveless shirt.

LOCAL AND NATIONAL CALENDARS

2023 SWAP MEET & CAR SHOW SCHEDULE

June 14-17, 2023	Petit Jean Swap Meet	Petit Jean, AR
October 1, 2023	All Ford's Day SHOW-N-SHINE	Wichita KS
October 3-6, 2023	Hershey Region AACA Swap Meet	Hershey, PA



2023 FUTURE REGIONAL & NATIONAL MODEL A MEETS

June 11-16, 2023.....	Midwest Regional Meet.....Breckenridge, CO
July 16-21, 2023.....	MAFCA National Tour.....Indiana & Michigan
July 30-August 4, 2023....	MARC National Meet.....Hamilton, Ohio
September 15-16, 2023.....	12th Annual Model A Days at MAFFI Museum..Hickory Corners, MI
Nov 30-Dec 2, 2023.....	MAFCA National Awards Banquet.....Santa Maria, CA
June 23-20, 2024.....	MAFCA National Convention hosted by Santa Maria A's.....Ruidoso, New Mexico



ERIC WENINGER
OWNER

2045 S BEDFORD ST
WICHITA, KS 67207

316-619-1821 CELL
316-685-2553 SHOP

info@modelamedic.com
www.modelamedic.com
www.facebook.com/modelamedic

**THE
MODEL A
MEDIC LLC**



NEW AND USED MODEL A FORD PARTS

SPECIALIZING IN FULL SERVICE REPAIRS
AND RESTORATION

B&B Electric Motor Co.
Your One Stop Industrial Service Center

**New • Repair • Rewind
Electric Motors • Pumps**

Phone (316) 267-1238 • 1-800 499-1238
Fax (316) 267-0599 • Emergency (316) 641-0806
email: bbemc@msn.com • bbelectricmotor.com

332 Lulu
Wichita, KS 67211

Ed Giesen
Customer Service

Join the Wichita A's.
We meet on the 4th Monday of each
month except December

Minisa Park, 704 W. 13th Wichita,
KS at 7 PM

Mishelle Whitney

mishelle@loracompany.com

624 E. Harry Street
Wichita, KS 67211

316-263-2565 * 1-800-554-0144

Fax 316-263-5181
www.loracompany.com

Lorac Company, Inc.

*Basement Window Well Cover * Powder Coating
* Custom Metal Fab * Media Blasting*



COSH
REAL ESTATE SERVICES

RAY HARSHFIELD
Realtor

ADDRESS
1356 N Emporia St
Wichita, KS 67214

CELL: 316-305-1705
OFFICE: 316-260-2674
FAX: 316-260-9902
ray.harshfield@cosh.us

**MODEL A FORD CLUB OF
COLORADO**

REGISTER FOR

2023 High Country Tour in

Breckenridge, CO this June



**Top Notch
Heating & Cooling**

Jesse James
Service/Install Manager
(316) 253-0819

24 Hour Emergency Service

ELLERMAN SPEEDOMETERS

STEWART-WARNER FOR
FORD MODEL A
OVAL OR ROUND
RESTORATION



DENNIS ELLERMAN
316.722.2107 OR
316.765.1506

ELLERMANSPEEDOMETERS@COX.NET

Wichita A's Model A Ford Club
P.O. Box 25
Wichita, KS 67201



Address Service Requested

Wichita A's Model A Ford Club Contacts

If you chose to email one of the following contacts, go to our web page at www.wichitaas.com and click on contacts and send your email from there. Include the person you want to email in your message

- President**, James Sharp
..... (
- Vice President**, Frank Chenoweth
.....(
- Secretary**, Kathy James
.....(
- Treasurer**, Claudia Ellerman
..... (
- Tour Chairman**, Don Grabendike
.....(
- Membership**, Linda Kibbe
.....(
- Newsletter Editor**, Sheila Orr
sheorr@sbcglobal.net.....(
- Webmaster**, Darren Schuster

The Rumbleseat Review is the official publication of the Wichita A's Model A Ford Club, Inc., a local chapter of the Model A Ford Club of America and the Model A Restorers Club. It's purpose is to keep members informed of past, present and future events, activities, and club news. In addition, this newsletter includes articles and other information to aid in the restoration and enjoyment of the Model A Ford automobile.

This publication is mailed or emailed to members, prospective members and editors of similar publications prior to monthly meetings. Meetings are usually the fourth Monday of the month. Members may publish antique car related ads only for free of charge which includes items wanted, items for sale, or items for trade. We invite members to submit articles containing technical Model A information and other interesting tidbits for publication in this newsletter. Items to be published must be submitted to the newsletter editor by deadline shown in the calendar. Wichita A's membership dues are \$25.00, per year (October to September30). MAFCA dues are \$50.00 per year and MARC dues are \$45.00 per year. A business card advertisement in this newsletter is \$25.00 per year.